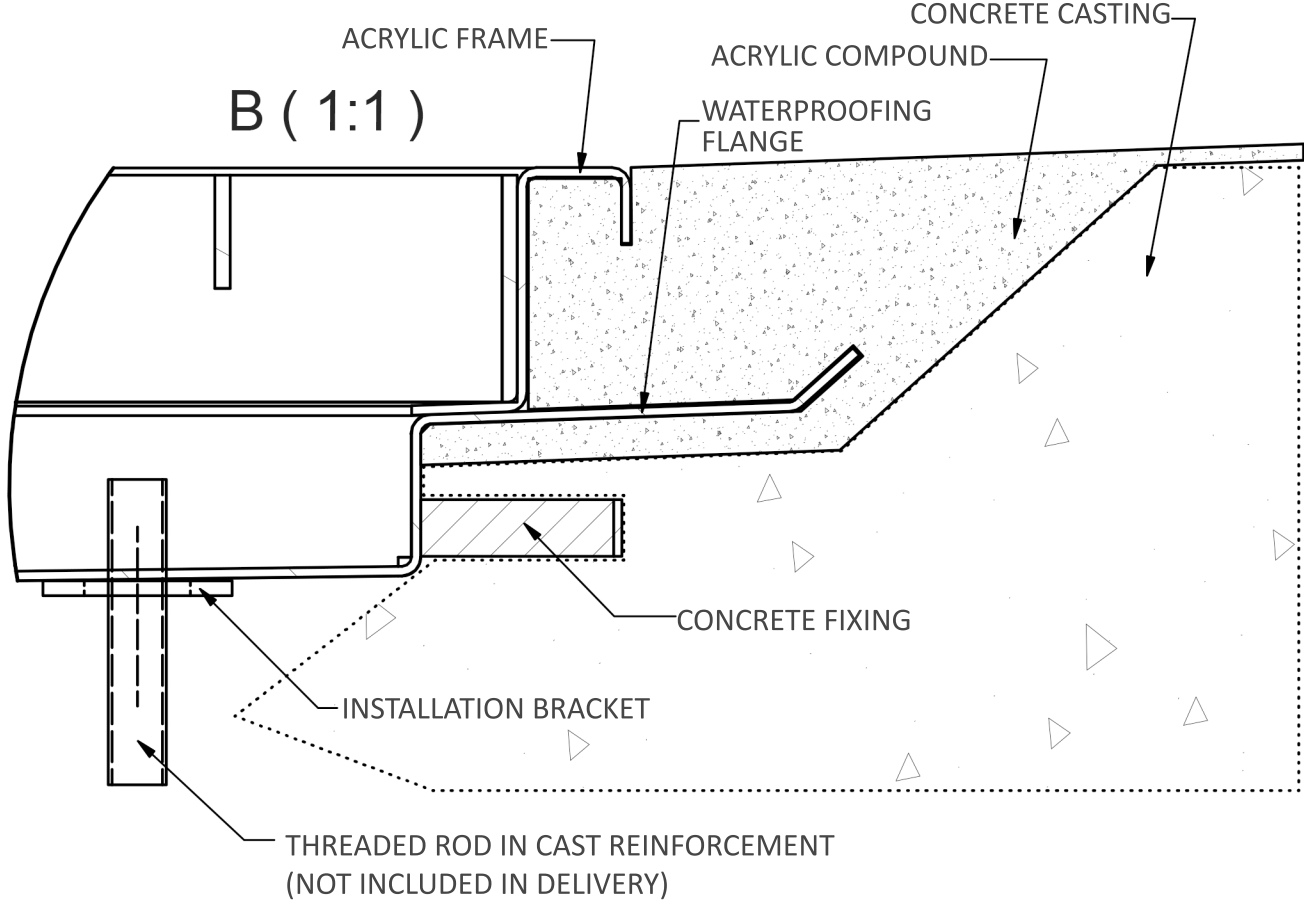
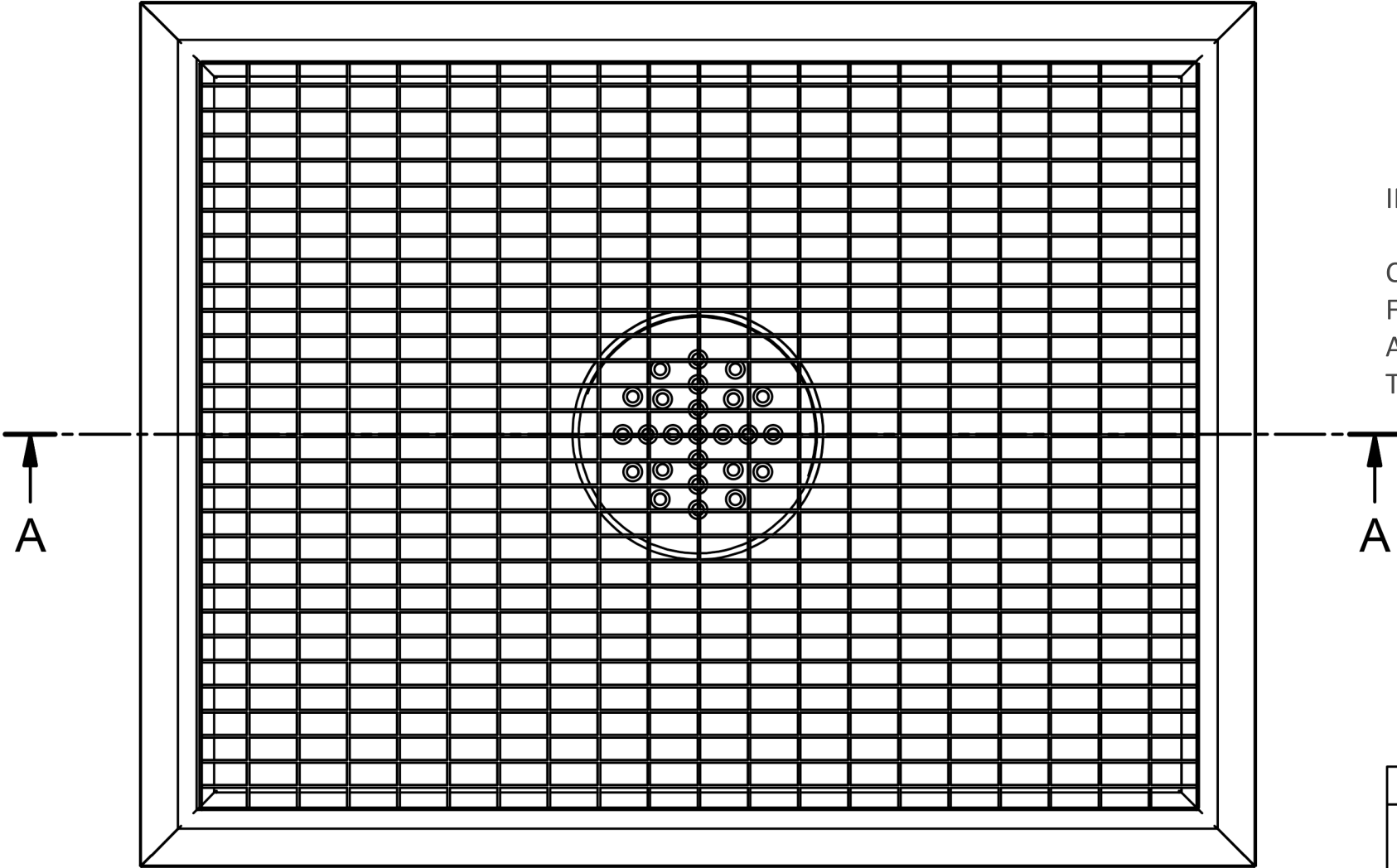
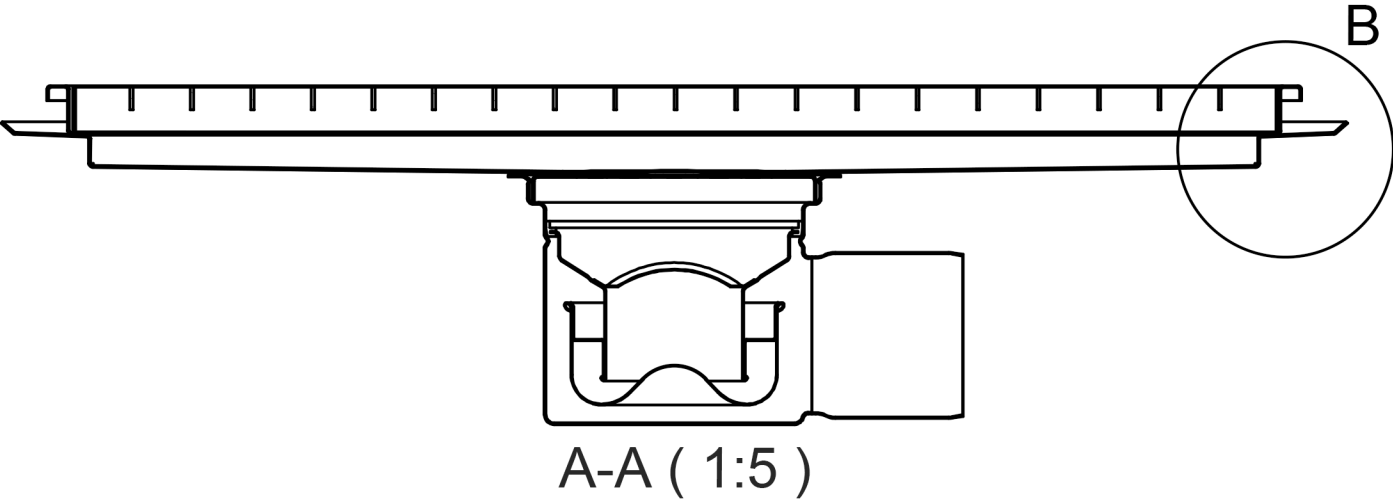


THE TANK AND GRATING(S) ARE MANUFACTURED ACCORDING TO CUSTOMER SPECIFICATIONS.
THE TANK CAN BE EQUIPPED WITH A FLOOR DRAIN, TANK DRAIN OR SAND SEPARATING DRAIN.



INSTALLATION INSTRUCTIONS FOR COMPOSITE FLOORING

CAST THE TANK FRAME USING CONCRETE CASTING BELOW THE WATERPROOFING FLANGE. A CAST FLOOR COATING (E.G. ACRYLIC COMPOUND) IS APPLIED NEXT, UP TO THE ACRYLIC FRAME. ADJUST THE TANK USING INSTALLATION BRACKETS UNTIL IT REACHES THE DESIRED LEVEL, IN-LINE WITH THE SURFACE.

POS.	PIRUSTUS NRO.	KUVAUS, NIMITYS...	KPL	MATERIAALI	HUOM.
FLOOR TANK FOR COMPOSITE FLOORING INSTALLATION DRAWING				MITTAKAAVA A3	PIRUSTUS NRO. / PVM. mika 27.11.2017
				PAINO (kg)	TARKASTANUT / PVM. HYVAKSYNYT / PVM.
STAINLESS TEAM FINLAND OY		TIEDOSTO: ALLAS_MASSALATTIALLE_1.i		PIRUSTUS NRO.	VERSIO