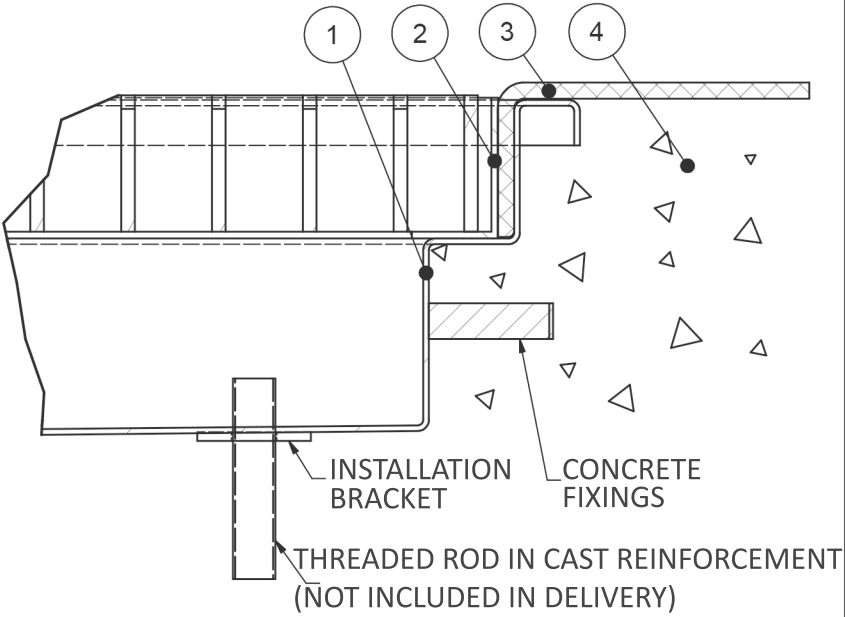
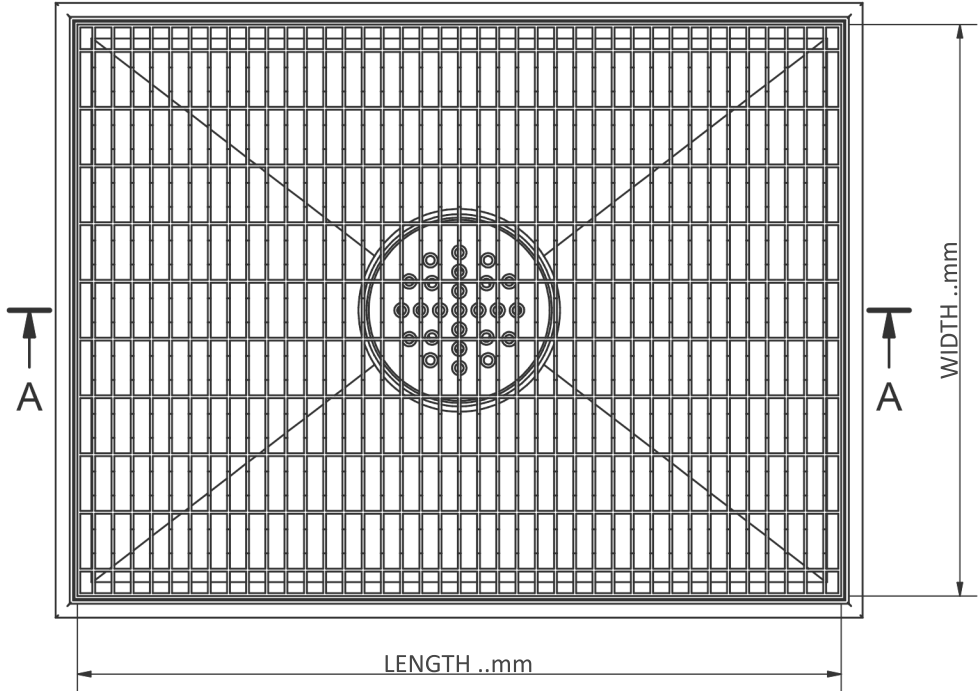
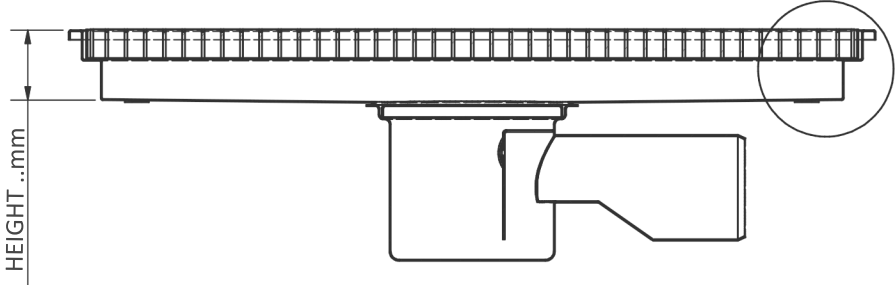


THE TANK AND GRATING(S) ARE MANUFACTURED
ACCORDING TO CUSTOMER SPECIFICATIONS.
THE TANK CAN BE EQUIPPED WITH A FLOOR DRAIN,
TANK DRAIN OR SAND SEPARATING DRAIN.



INSTALLATION INSTRUCTIONS FOR VINYL FLOORING

CAST THE TANK FRAME(1) BY POURING IN CONCRETE(4). PULL THE VINYL FLOORING(3) OVER THE TANK AND CUT OVER THE MIDDLE OF THE TANK, IN THE FORM OF A CROSS. BEND VINYL FLOORING EDGES DOWNWARDS, ALONG THE TANK EDGES AND PRESS A PLASTIC WEDGE RING(2) IN PLACE. ADJUST THE TANK USING INSTALLATION BRACKETS UNTIL IT REACHES THE DESIRED LEVEL, IN-LINE WITH THE SURFACE.

POS.	KUVAUS, NIMITYS...	PIIRUSTUS	KOKO	MATERIAALI	MASSA (KG)	KPL
FLOOR TANK FOR VINYL FLOORING INSTALLATION DRAWING			ARKIN KOKO	SUUNNITTELIJA	PVM	
			A3	TK	6.3.2006	
			SIVU	TARKASTAJA	PVM	
			1 / 1	JPH		
				HYVAKSYJA	PVM	
				AM		
				KOKONAISHASSA		REVISIO
LAMMINKOTIE 2 77600 SUONENJOKI TEL. +358 17 2511 941 FAX. +358 17 2511 949 WWW.STAINLESSTEAM.FI			STAINLESS TEAM FINLAND OY		✓(✓)(✓)(✓)	